



Free 6'x8' Storage Shed Plan

Free vs. Premium Plan: What's the Difference?

We offer both free and premium versions of our detailed shed plans, designed to fit your needs and budget. Check out the table below to see the key differences and choose the plan that's right for you:

Features	Free Plan	Premium Plan
Steps Count	11	21
Illustrations per Step	Limited	Every Step
Print Ready Format	X	✓
Step-by-Step Instructions	Basic	Comprehensive
Full Materials & Cutting List	X	✓
Additional Illustrations	X	✓
Additional Blueprints	X	✓
Tools List	X	✓
Fastening Elements List	X	✓
Technical Support	X	✓

[Try Premium Risk-Free](#)

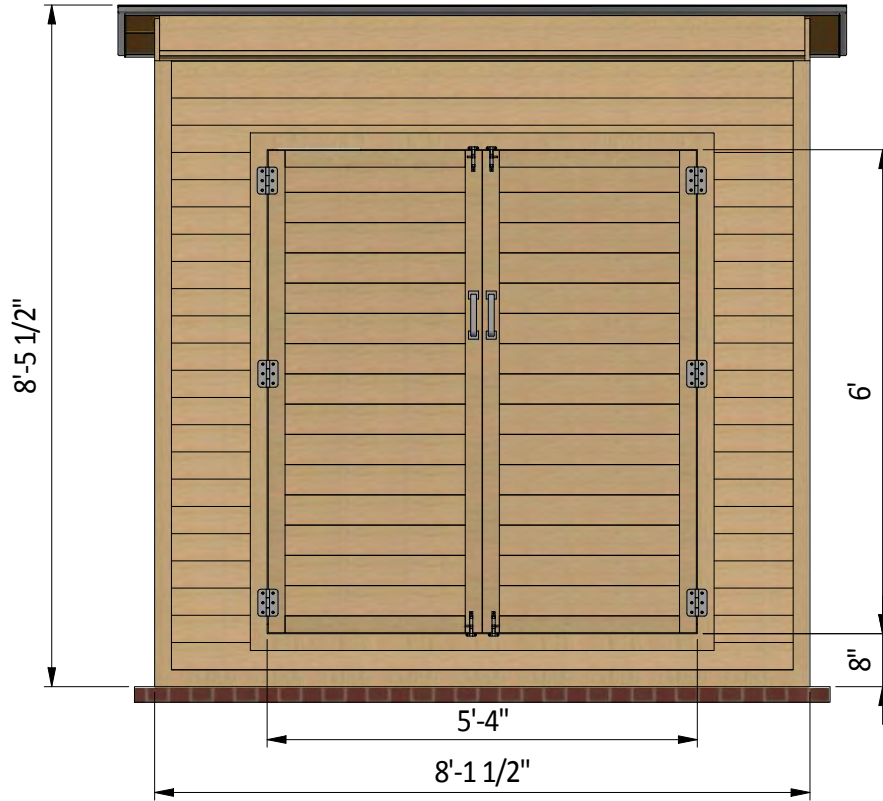
60-day refund policy with no questions asked.

* fli, fihcfU[Y'g\YX'g\cdd]b[~]gh

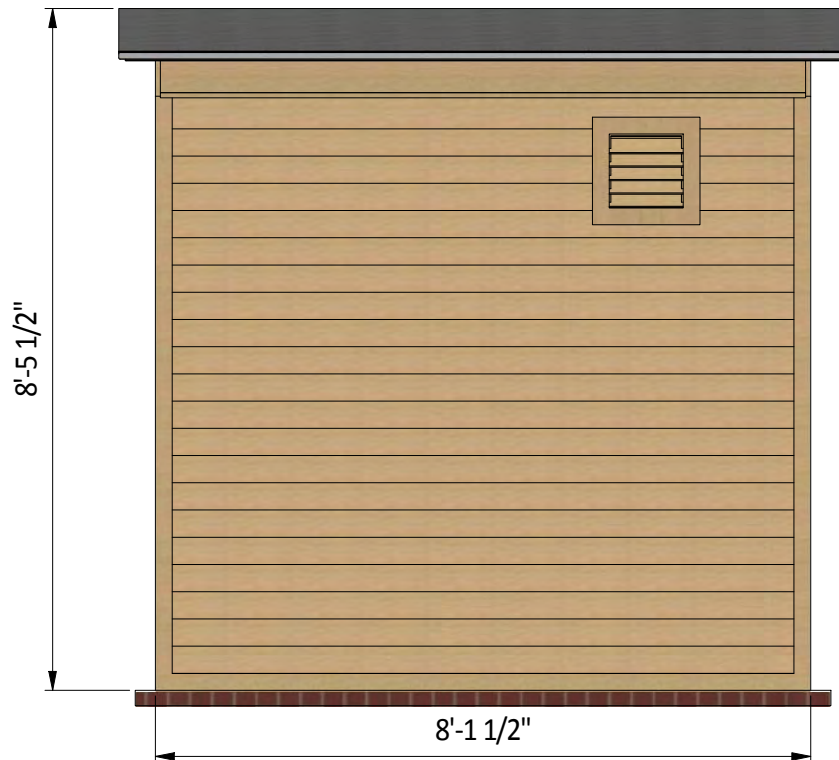
Material	Unit	Qty	Size
Pressure-Treated Board 1x12	pcs	1	8'
Pressure-Treated Lumber 1x2	pcs	2	6'
Pressure-Treated Lumber 1x2	pcs	2	8'
Pressure-Treated Lumber 1x3	pcs	6	6'
Pressure-Treated Lumber 1x3	pcs	9	8'
Pressure-Treated Lumber 1x3	pcs	1	10'
Pressure-Treated Board 1x4	pcs	1	8'
Pressure-Treated Board 1x6	pcs	2	8'
Pressure-Treated Lumber 2x4	pcs	10	6'
Pressure-Treated Lumber 2x4	pcs	16	8'
Pressure-Treated Lumber 2x4	pcs	3	12'
Pressure-Treated Lumber 2x6	pcs	7	8'
Pressure-Treated Lumber 2x8	pcs	9	6'
Pressure-Treated Lumber 2x8	pcs	2	8'
Pressure-Treated Lumber 4x4	pcs	6	8'
Plywood (5/8)	pcs	6	4' x 8'

G]nY/ '8]a Ybg]cbg

Zcbh



VUW

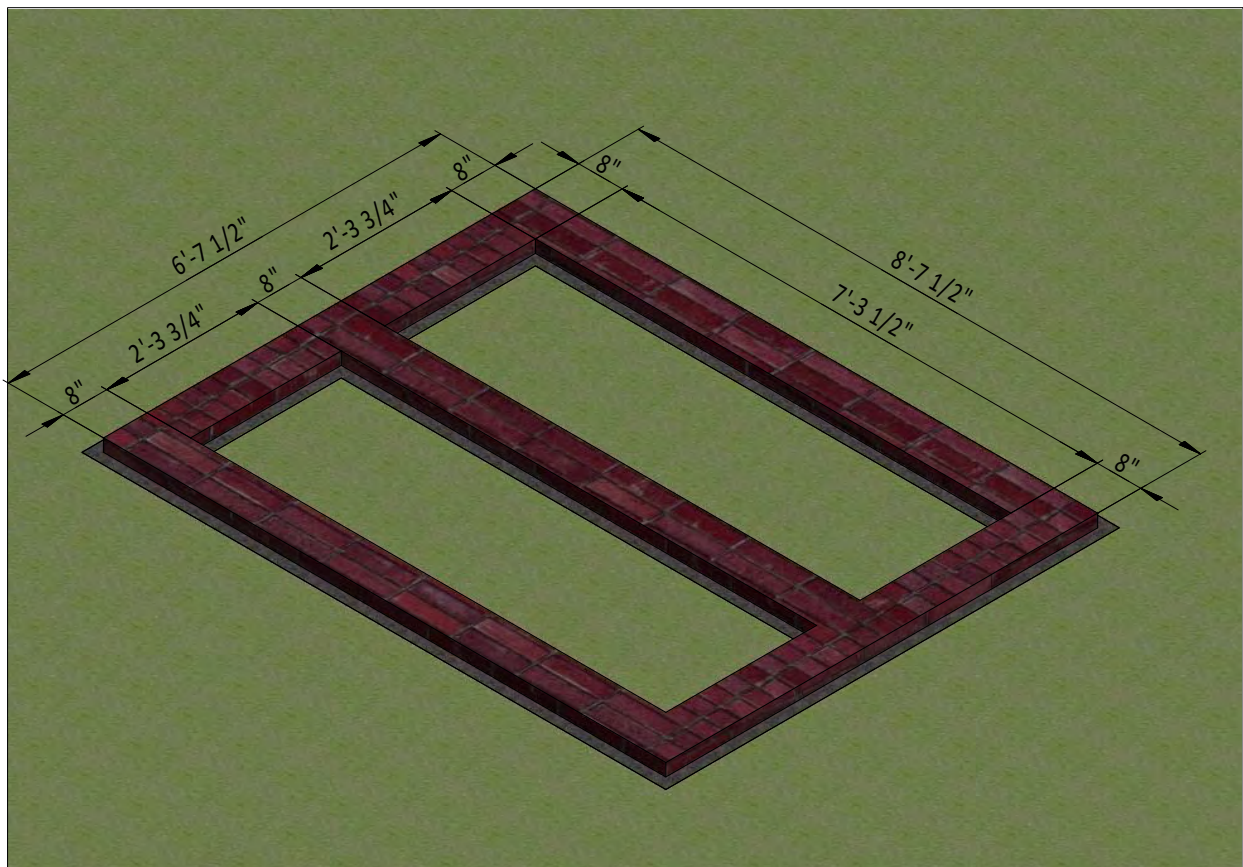
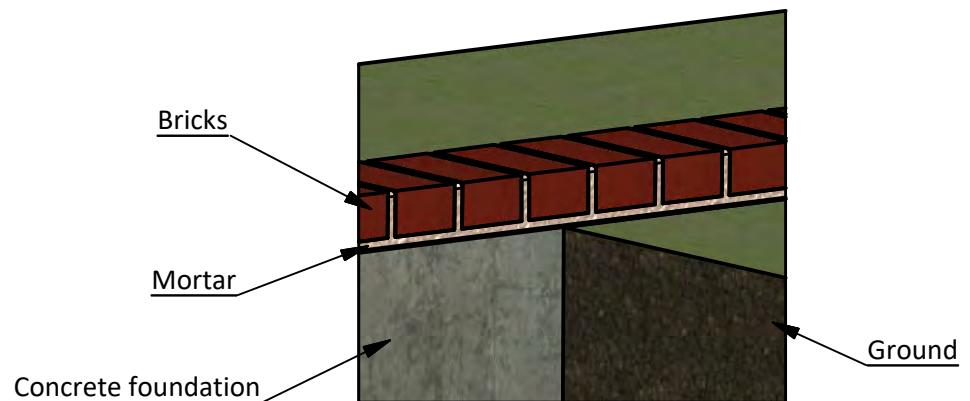


STEP 1

Foundation Preparation

1.1 Fill the trenches to ground level with concrete and let cure, or harden. Since curing times vary between brands, read the packaging for recommended curing times.

1.2 Once the concrete has cured, use standard-sized bricks and lay them across the foundation. You will need roughly 100 bricks for this step.



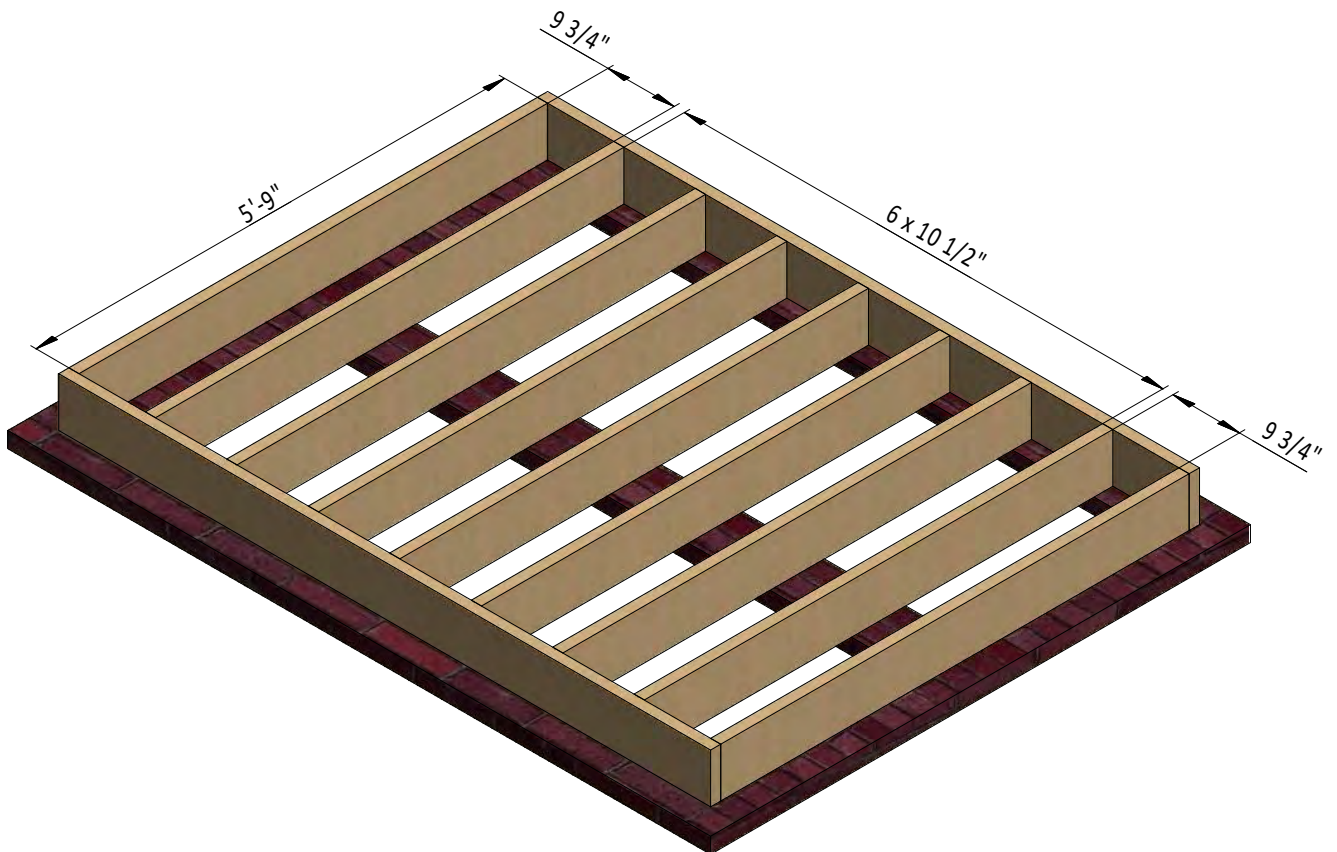
STEP 2

Framing the Floor

2.1 Assemble the frame using $1\frac{1}{2}$ " x $7\frac{1}{4}$ " pressure-treated lumber. You will need seven boards cut to 5'-9" that will be the joist.

2.2 Secure the beams with 8x5" wood screws.

2.3 Using a speed square or carpenter's square, check the corners to make sure they are 90°.

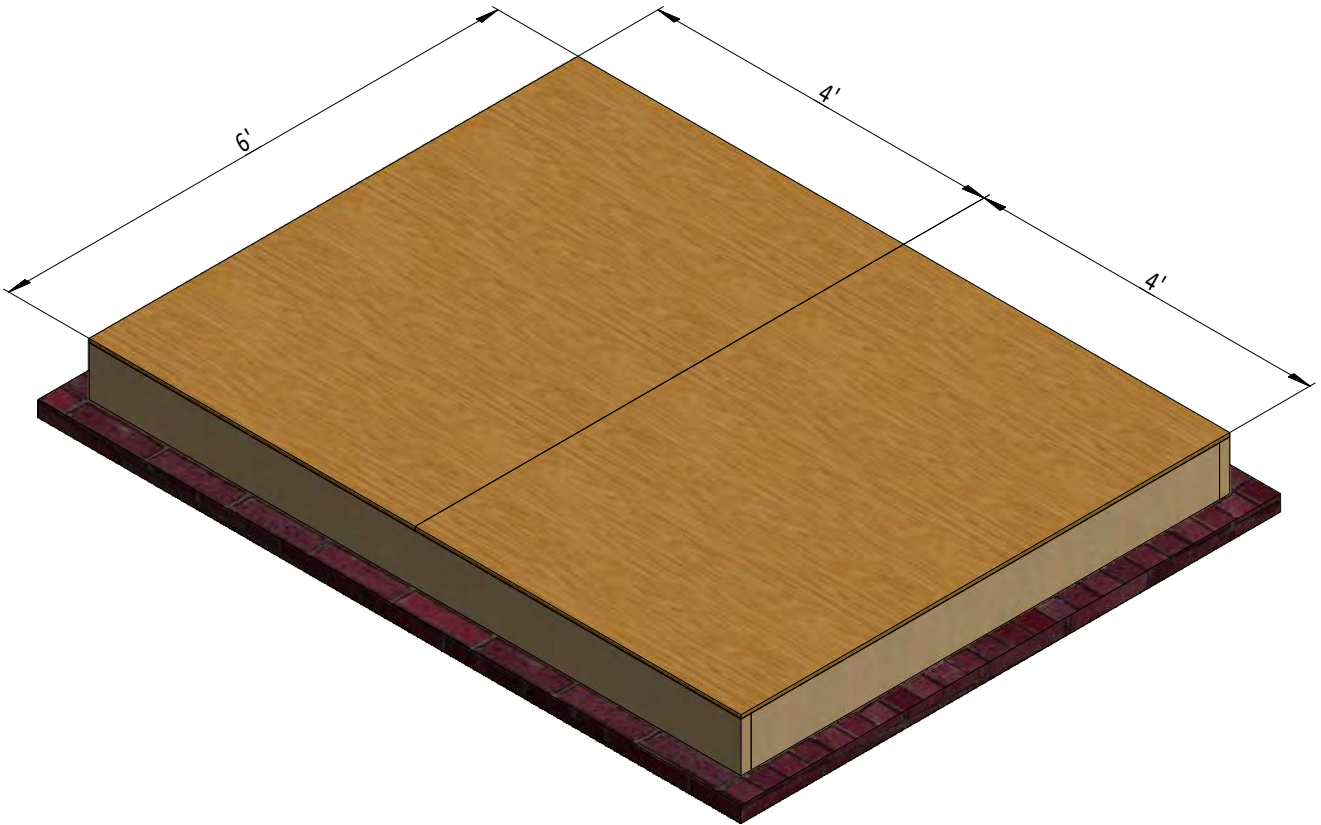


STEP 3

Install the Plywood Floor

3.1 Prepare the 9/16" plywood for the floor sheathing according to the drawing. You will need two 4' x 6' sheets.

3.2 Secure the plywood with 2" wood screws.



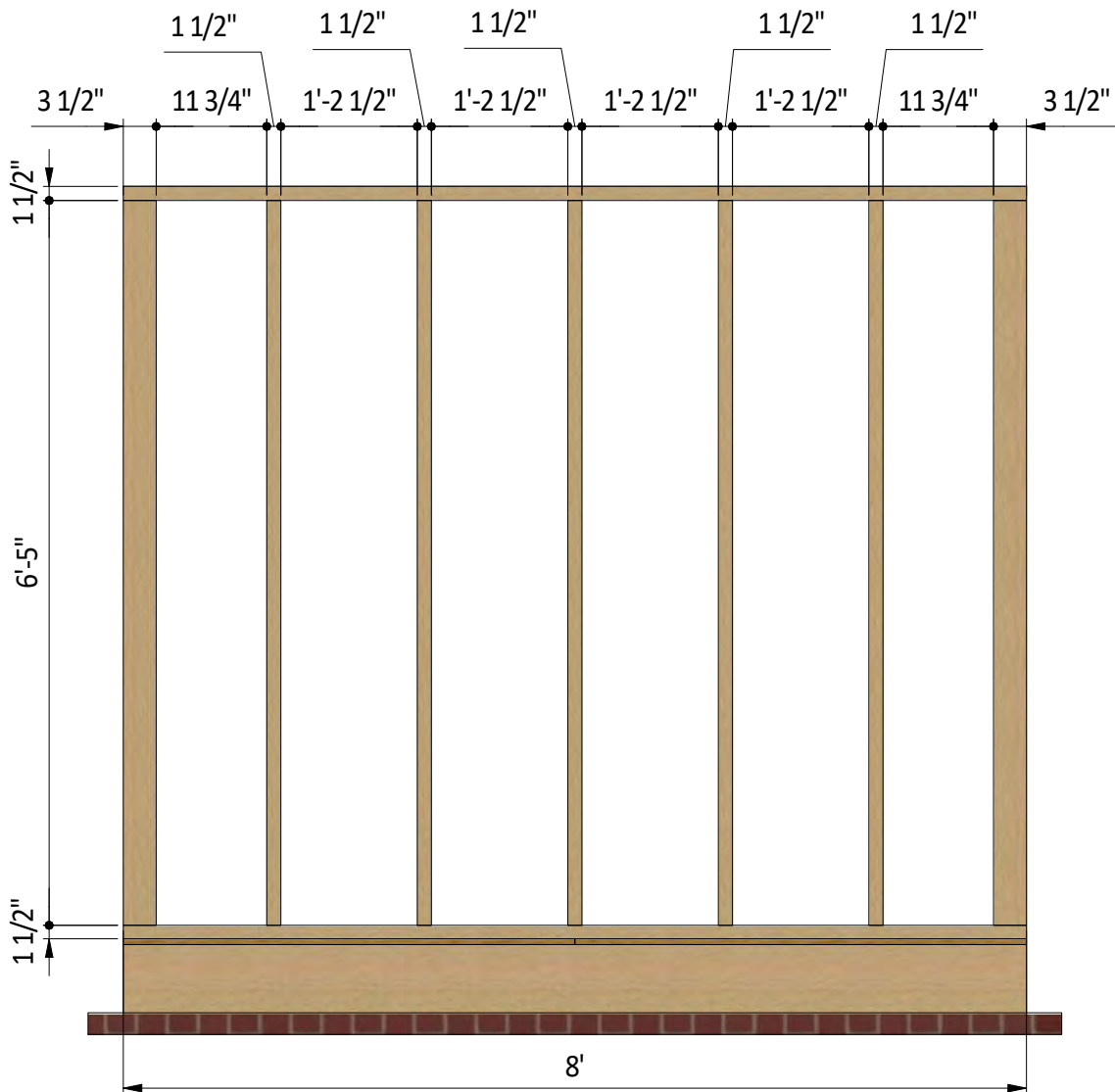
STEP 5

Assemble Back Wall Frame

5.1 Using 1 1/2" x 3 1/2" and 3 1/2" x 3 1/2" pressure-treated lumber, construct back wall frame using the drawing below as a reference. You will need seven boards cut to 6'-5" that will be the studs and two boards cut to 8' that will be the top and bottom plates.

5.2 Connect the beams with 2x3" wood screws.

5.3 Using a speed square or carpenter's square, check the corners to make sure they are 90°.



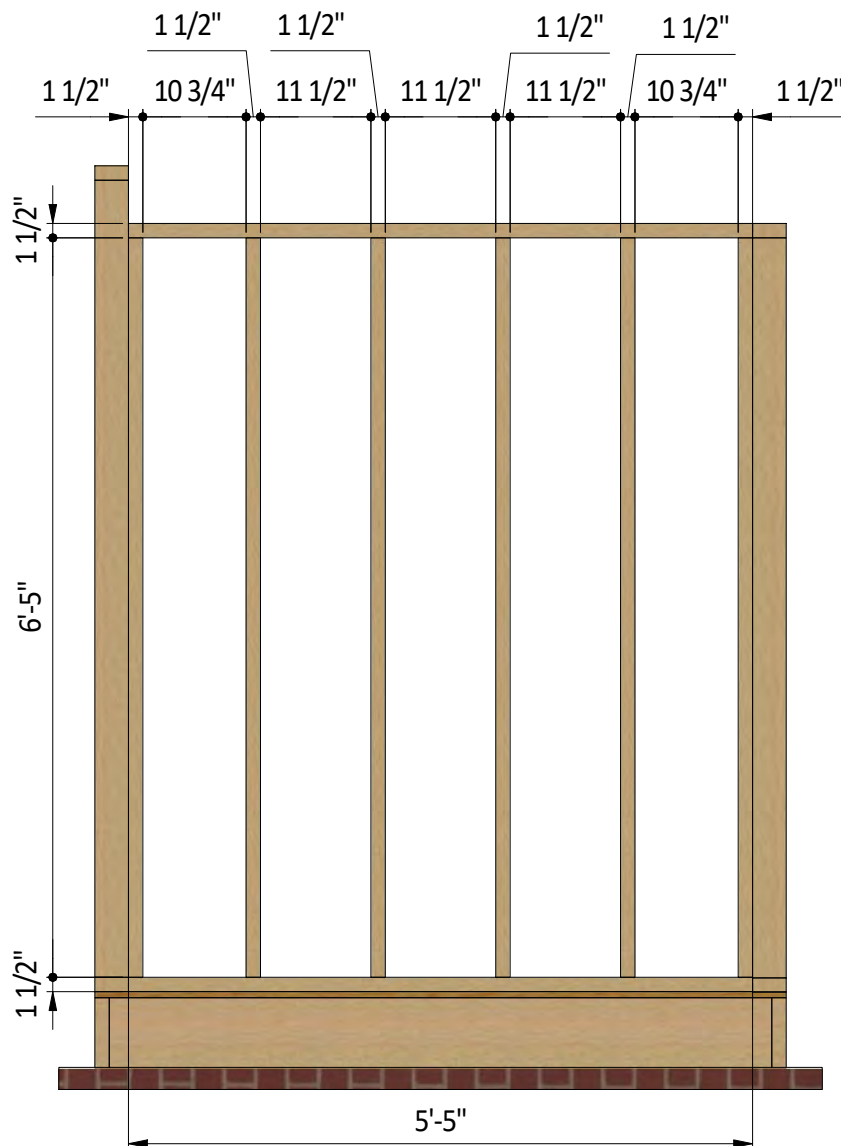
STEP 6

Assemble Side Wall Frame

6.1 Using 1 1/2" x 3 1/2" pressure-treated lumber, construct right wall frame using the drawing below as a reference. You will need six boards cut to 6'-5" that will be the studs and two boards cut to 5'-5" that will be the top and bottom plates.

6.2 Connect the beams with 2x3" wood screws.

6.3 Using a speed square or carpenter's square, check the corners to make sure they are 90°.

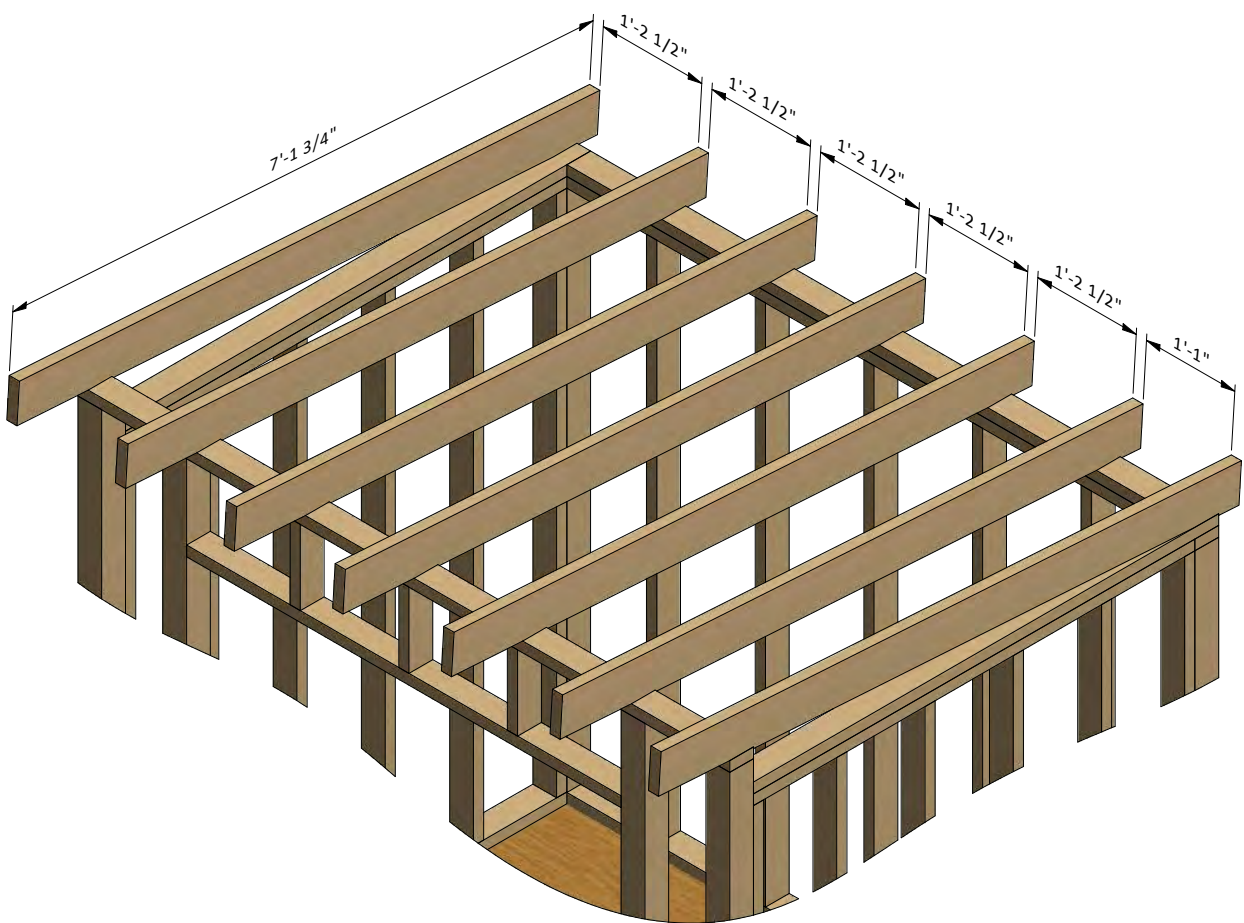


STEP 7

Assemble The Roof Frame

7.1 Using 1 1/2" x 5 1/2" pressure-treated lumber, cut seven rafters 7'-1 3/4" long according to the dimensions in drawing below. Cut the recesses in each beam for splicing connection with wall frames.

7.2 Connect the beams with a top frame with the help of 5" wood screws.



STEP 8

Install Plywood for the Roof

8.1 Cut sheets of 5/8" plywood for the roof sheathing using the drawing below as a guide. You will need one 1'-9 1/4" x 8' sheet and two 4' x 7'-2 3/4" sheets.

8.2 Secure the plywood with 2" wood screws.



STEP 9

Assemble and Install Shed Doors

9.1 Build the door frames for the shed using 1 1/2" x 3 1/2" pressure-treated lumber and secure with 5" wood screws. You will need two boards cut to 5'-11 3/4" that will be the vertical girts and two boards cut to 2'-3 3/4" that will be the horizontal girts.

9.2 Prepare the 5/8" plywood sheet with dimensions 2'-7 3/4" x 5'-11 3/4" for the doors according to the drawing.

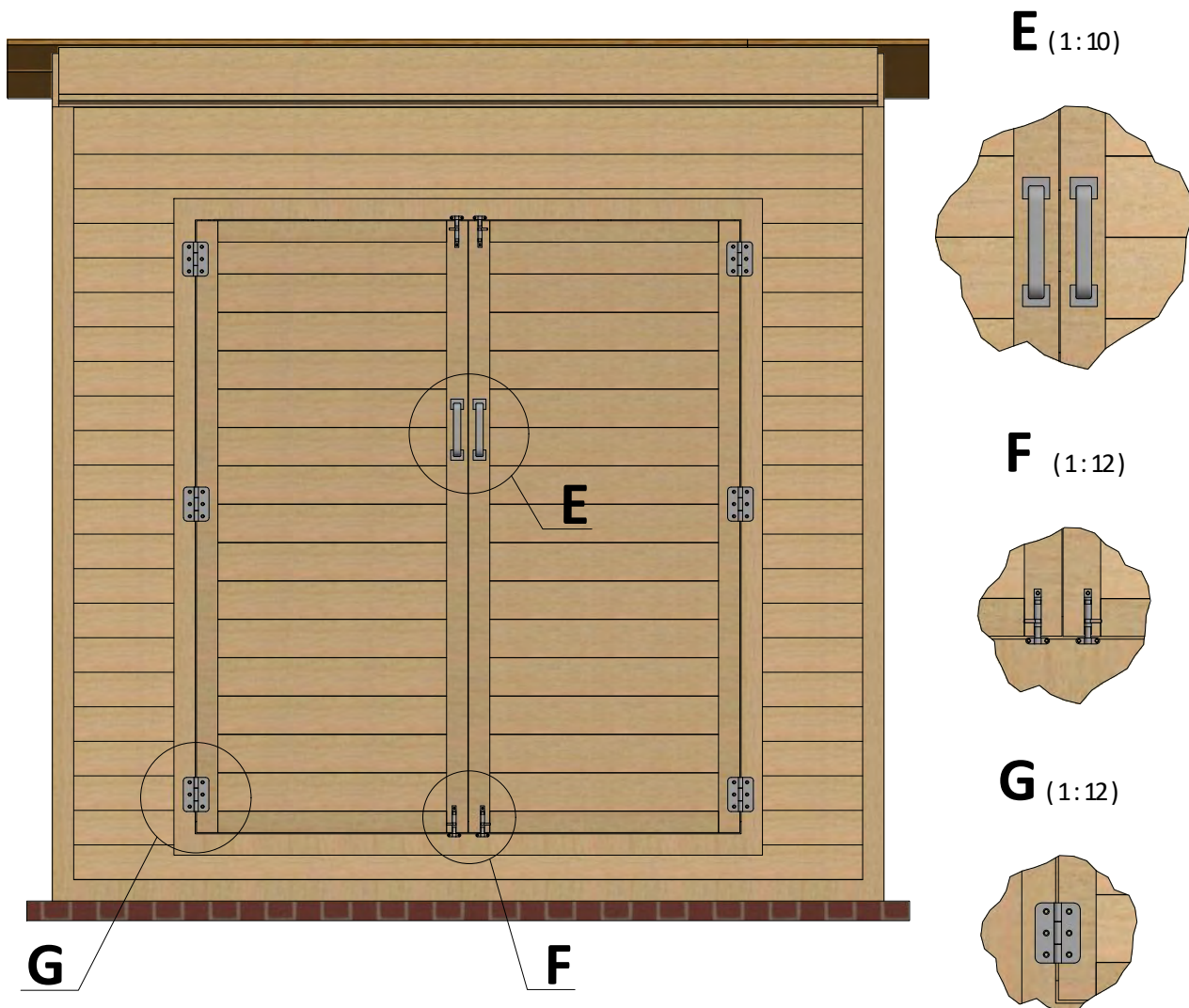
9.3 Use 3/4" x 2 1/2" pressure-treated lumber for the door trim and fasten with 2" wood screws. You will need two boards cut to 2'-2 3/4" and two boards cut to 5'-11 3/4".

9.4 Using 1/4" x 3/4" pressure-treated lumber, cut and install a starter course 2'-2 3/4" long using Node **D** on page 23 as a reference.

9.5 For the exterior siding on the door, use 1/2" x 6" wood siding boards and the illustration below as a reference.

9.6 Assemble siding shields with 2" galvanized nails.

9.7 Install three 3" door hinges using 6x1" wood screws. Finish the doors installation by attaching 4" surface bolts and 6" door pulls (see nodes **E**, **F**, **G**).



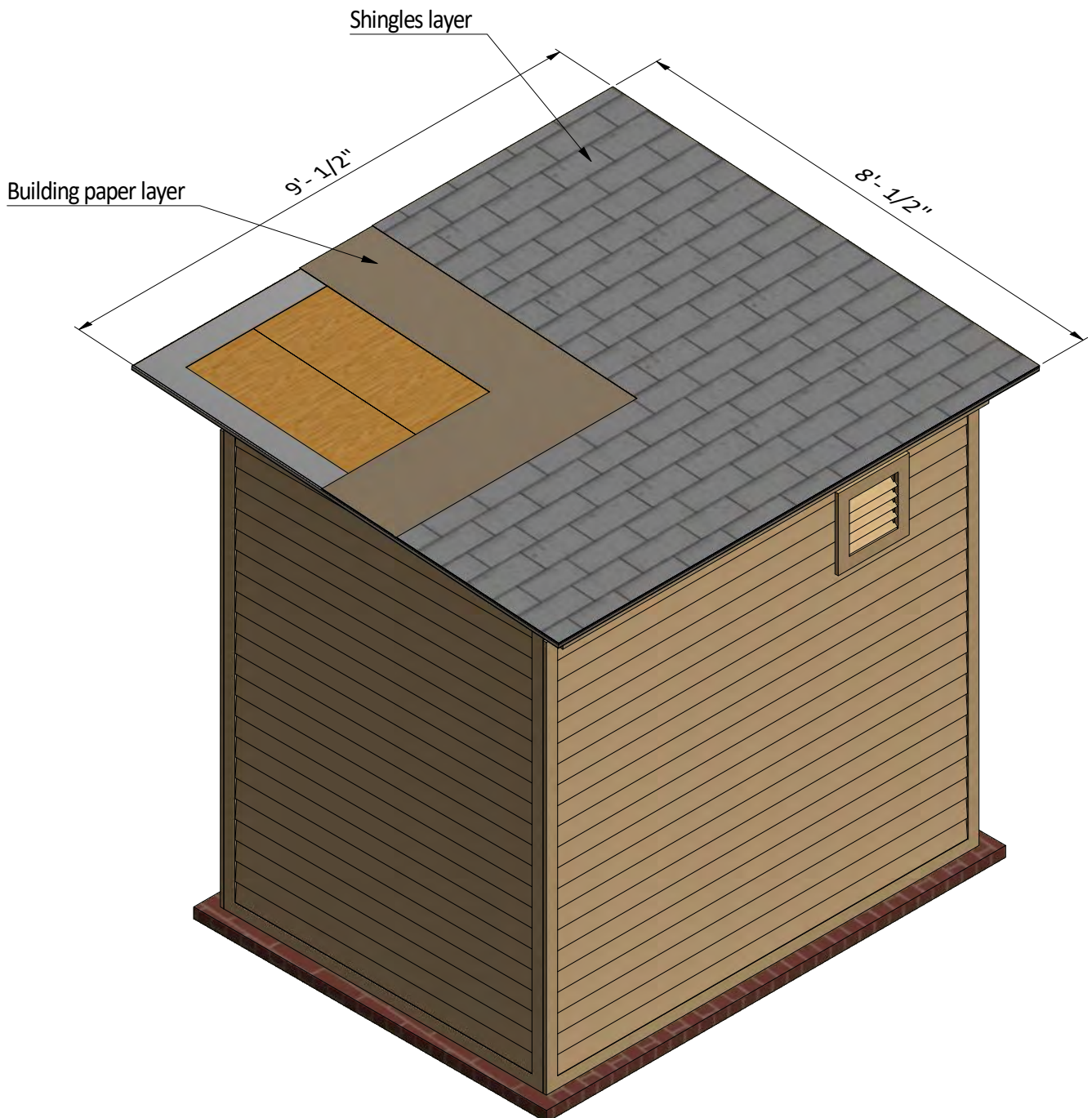
STEP 10

Roof Sheathing Installation

10.1 You will need 75 Sq Ft of building paper and asphalt shingle roofing.

10.2 Cover the plywood and drip edge with building paper. Try to install sheets with 1" overlapping. Use 2" nails to secure the sheets.

10.3 Install asphalt shingle roofing using an industrial stapler.



STEP 11

Shed Decoration

Now that your shed is all done, you are ready to decorate it any way you want using your favourite paint, stain, or preservative.



Free vs. Premium Plan: What's the Difference?

We offer both free and premium versions of our detailed shed plans, designed to fit your needs and budget. Check out the table below to see the key differences and choose the plan that's right for you:

Features	Free Plan	Premium Plan
Steps Count	11	21
Illustrations per Step	Limited	Every Step
Print Ready Format	X	✓
Step-by-Step Instructions	Basic	Comprehensive
Full Materials & Cutting List	X	✓
Additional Illustrations	X	✓
Additional Blueprints	X	✓
Tools List	X	✓
Fastening Elements List	X	✓
Technical Support	X	✓

[Try Premium Risk-Free](#)

60-day refund policy with no questions asked.



For more great **HOW-TO** plans please visit: <https://craft.camp>

Copyright

The text and illustrations that appear here are the exclusive property of craft.camp and are protected by federal copyright laws. The duplication, sale or distribution of any portion of these plans without prior written consent from the original designer will be subject to the appropriate penalties for copyright infringement. Sharing this plan on the web is only permitted with an indicated original source: <https://craft.camp>