



Free 8'x10' Storage Shed Plan

Free vs. Premium Plan: What's the Difference?

We offer both free and premium versions of our detailed shed plans, designed to fit your needs and budget. Check out the table below to see the key differences and choose the plan that's right for you:

Features	Free Plan	Premium Plan
Steps Count	10	25
Illustrations per Step	Limited	Every Step
Print Ready Format	X	✓
Step-by-Step Instructions	Basic	Comprehensive
Full Materials & Cutting List	X	✓
Additional Illustrations	X	✓
Additional Blueprints	X	✓
Tools List	X	✓
Fastening Elements List	X	✓
Technical Support	X	✓

[Try Premium Risk-Free](#)

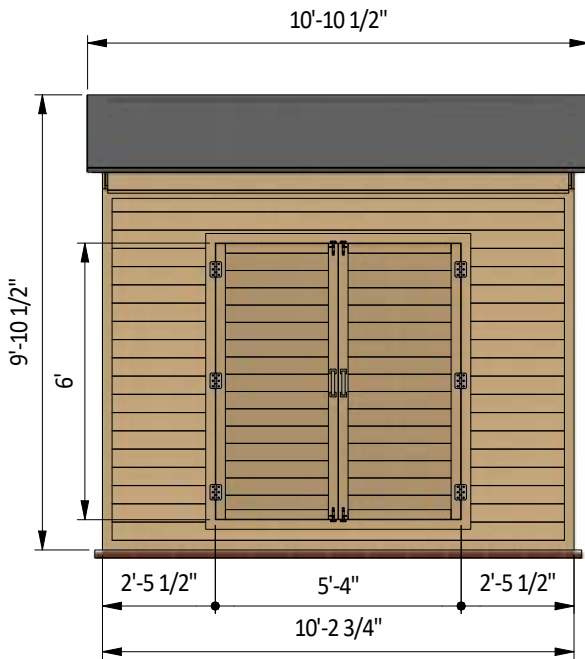
60-day refund policy with no questions asked.

8'x10' storage shed shopping list

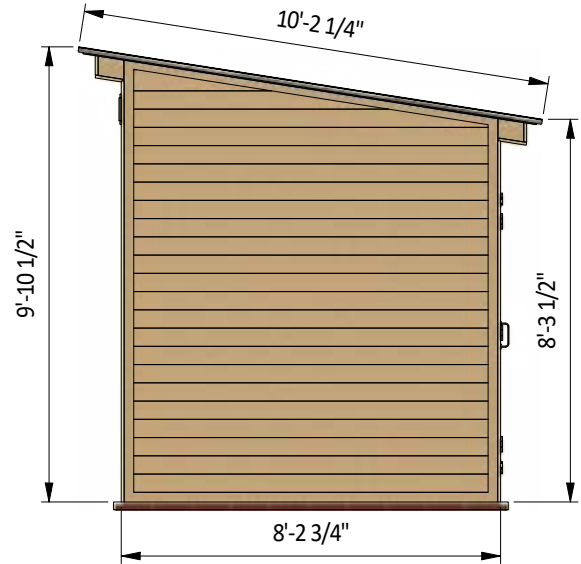
Material	Unit	Qty	Size
Pressure-Treated Lumber 1"x2"	pcs	2	8'
Pressure-Treated Lumber 1"x2"	pcs	2	10'
Pressure-Treated Lumber 1"x2"	pcs	1	6'
Pressure-Treated Lumber 1"x3"	pcs	8	6'
Pressure-Treated Lumber 1"x3"	pcs	8	8'
Pressure-Treated Lumber 1"x3"	pcs	10	10'
Pressure-Treated Lumber 1"x6"	pcs	2	10'
Pressure-Treated Lumber 1"x8"	pcs	2	10'
Pressure-Treated Lumber 2"x4"	pcs	14	6'
Pressure-Treated Lumber 2"x4"	pcs	24	8'
Pressure-Treated Lumber 2"x4"	pcs	13	10'
Pressure-Treated Lumber 2"x6"	pcs	9	10'
Pressure-Treated Lumber 2"x8"	pcs	9	8'
Pressure-Treated Lumber 2"x8"	pcs	2	10'
Pressure-Treated Lumber 2"x8"	pcs	2	6'
Pressure-Treated Lumber 4"x4"	pcs	2	8'
Pressure-Treated Lumber 4"x4"	pcs	2	10'
Plywood 4"x8"	pcs	24	4' x 8'

Size & Dimensions

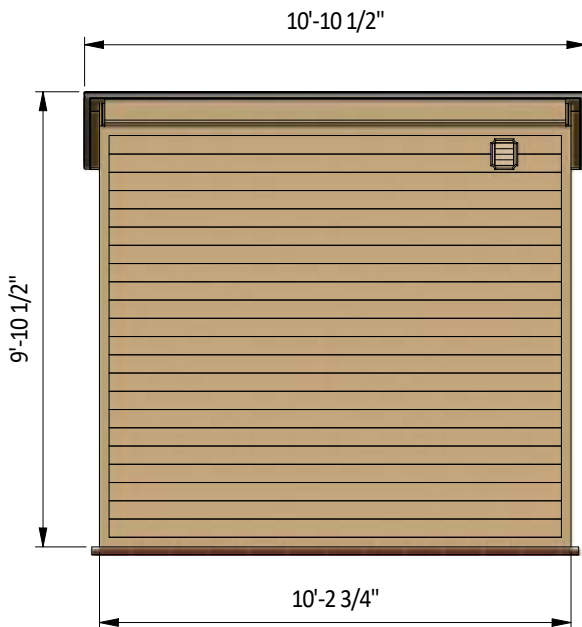
front



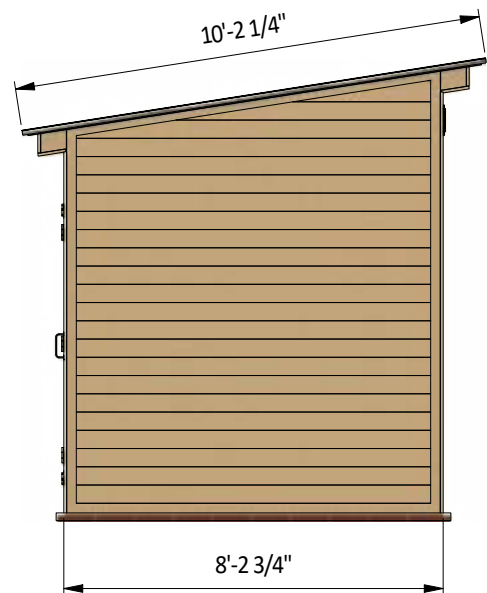
right



back



left

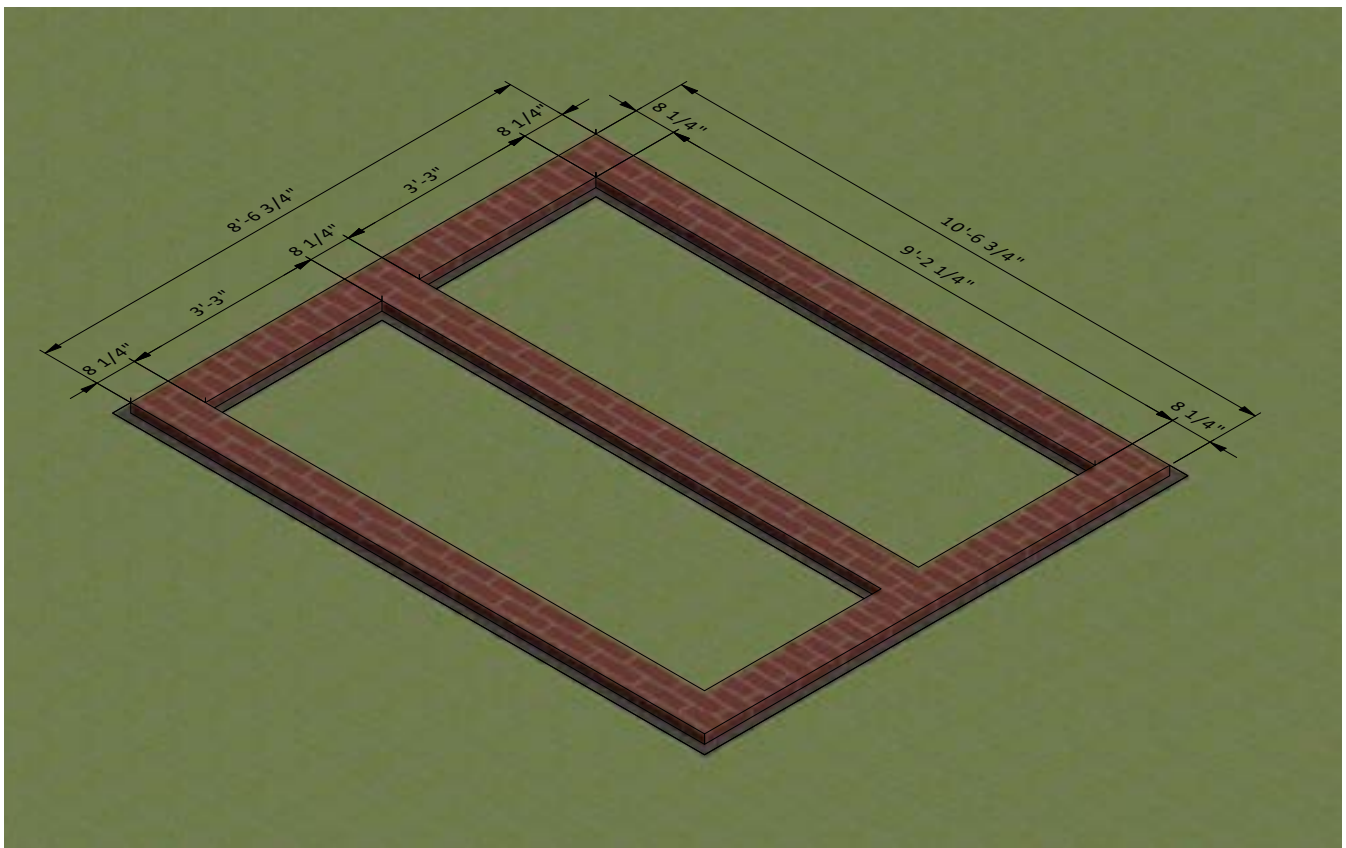
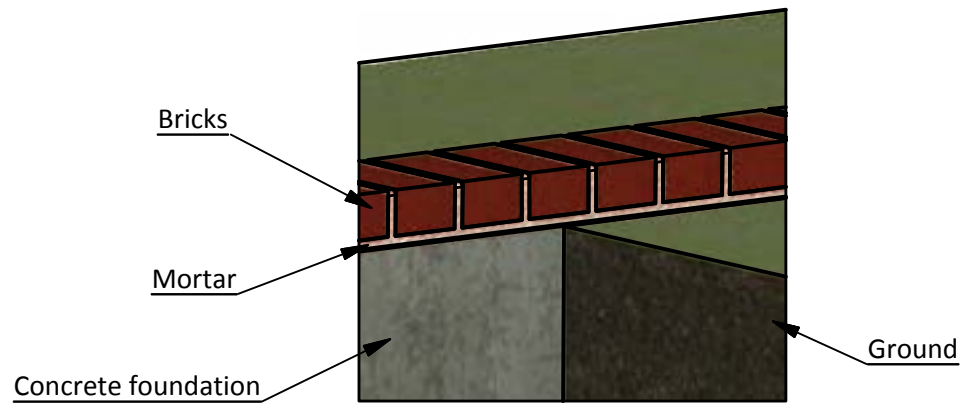


STEP 1

Foundation Preparation

1.1 Fill the trenches to ground level with concrete and let cure, or harden. Since curing times vary between brands, read the packaging for recommended curing times.

1.2 Once the concrete has cured, use standard-sized bricks and lay them across the foundation. You will need roughly 120 bricks for this step.



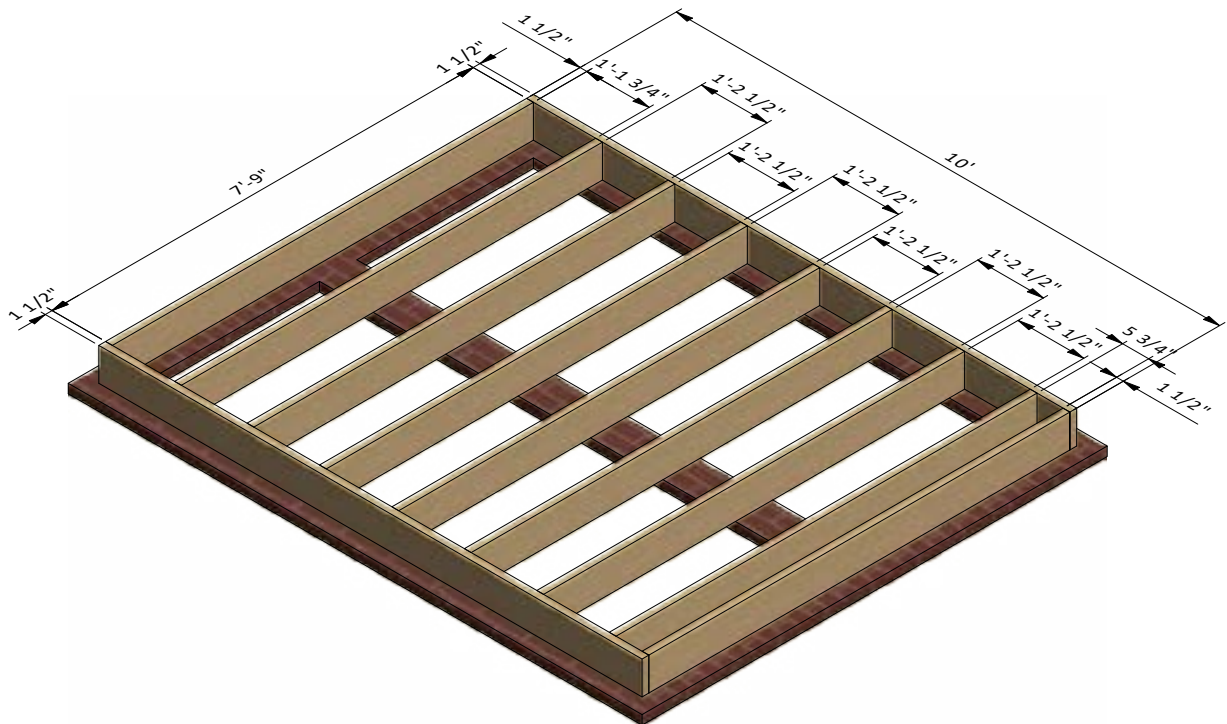
STEP 2

Framing the Floor

2.1 Assemble the frame using 1 1/2" x 7 1/4" pressure-treated lumber. You will need seven boards cut to 7'-9" that will be the joist.

2.2 Secure the beams with 8x5" wood screws.

2.3 Using a speed square or carpenter's square, check the corners to make sure they are 90°.

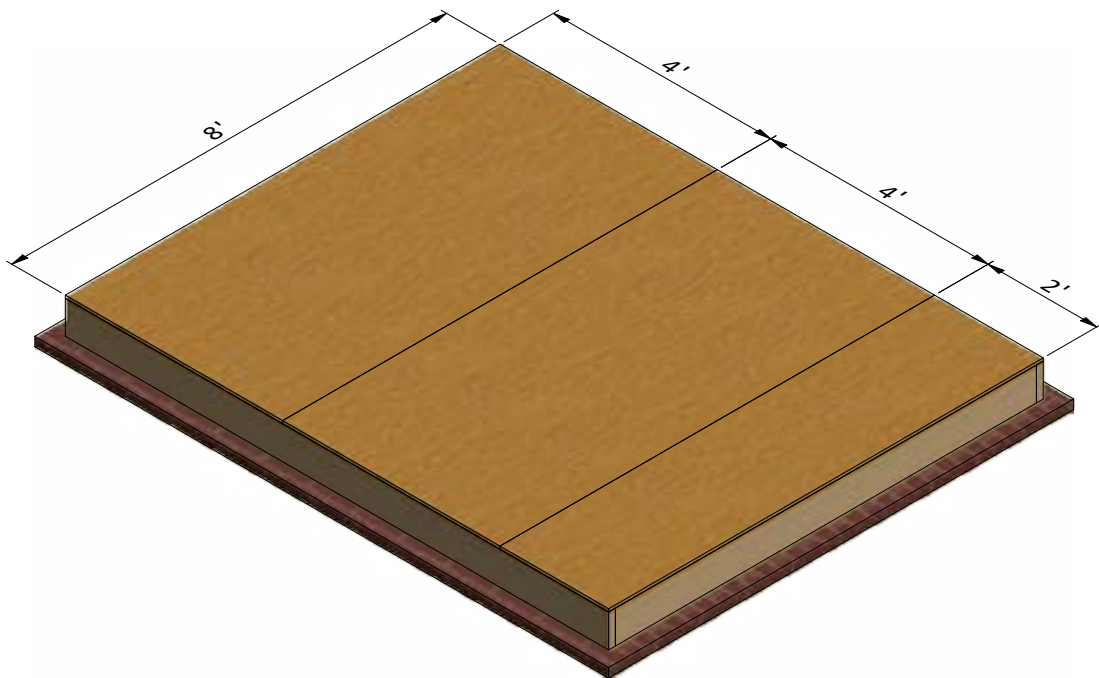


STEP 3

Install the Plywood Floor

3.1 Prepare the 5/8" plywood for the floor sheathing according to the drawing. You will need two 4' x 8' sheets and one 2' x 8' sheet.

3.2 Secure the plywood with 2" wood screws.



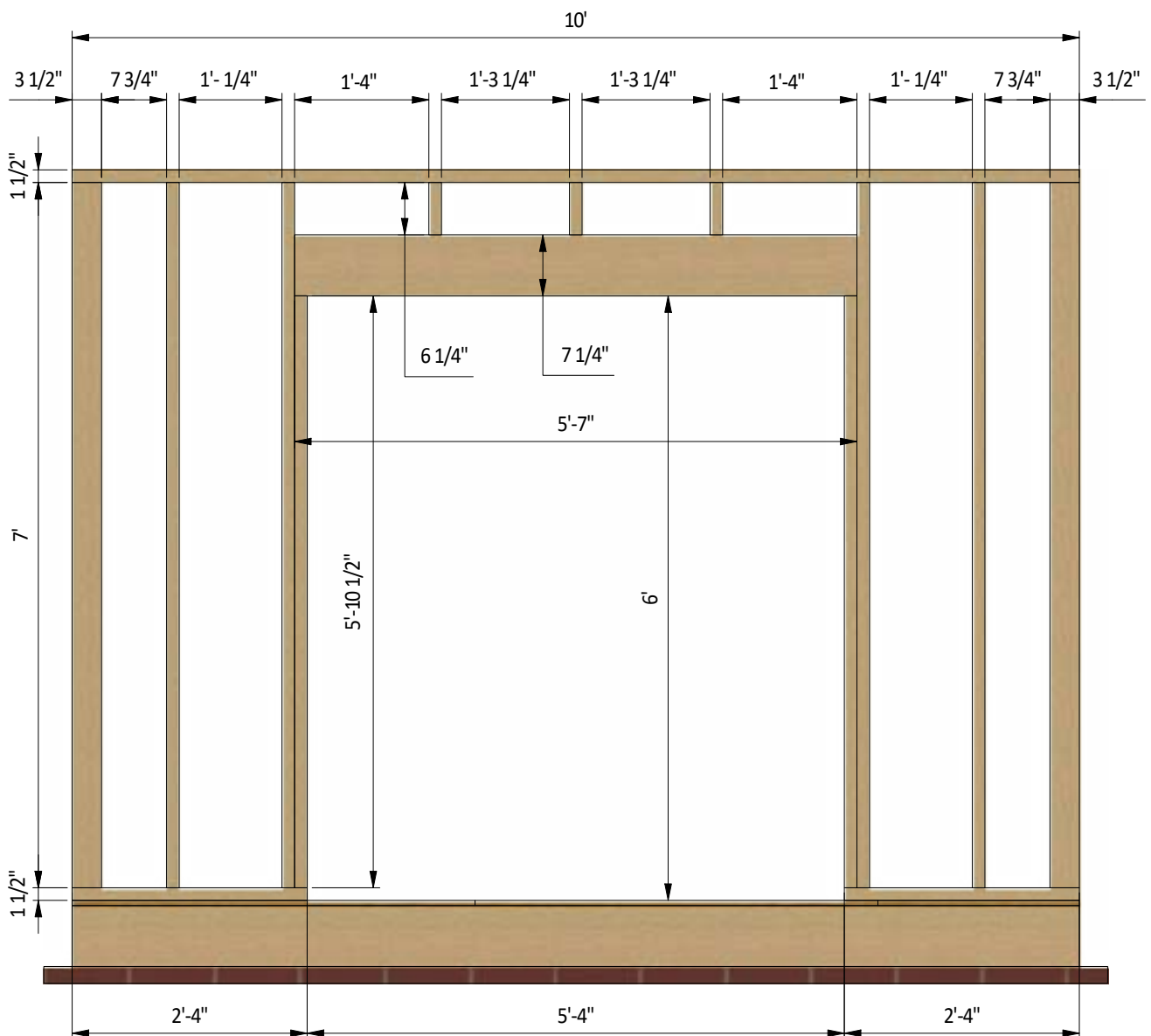
STEP 4

Assemble Front Wall Frame

4.1 Using 1 1/2" x 3 1/2", 3 1/2" x 3 1/2" and 1 1/2" x 7 1/4" pressure-treated lumber, construct front wall frame using the drawing below as a reference. You will need six boards cut to 7', two boards cut to 5'-10 1/2" that will be studs, two boards cut to 2'-4" that will be the bottom beams, one board cut to 10' that will be the top beam, two boards cut to 5'-7" and one sheet of 5/8" plywood cut to 7 1/4" x 5'-7" that will be the door header and three boards cut to 6 1/4" that will be cripple studs.

4.2 Connect the beams with 2x3" and 2x5" wood screws.

4.3 Using a speed square or carpenter's square, check the corners to make sure they are 90°.



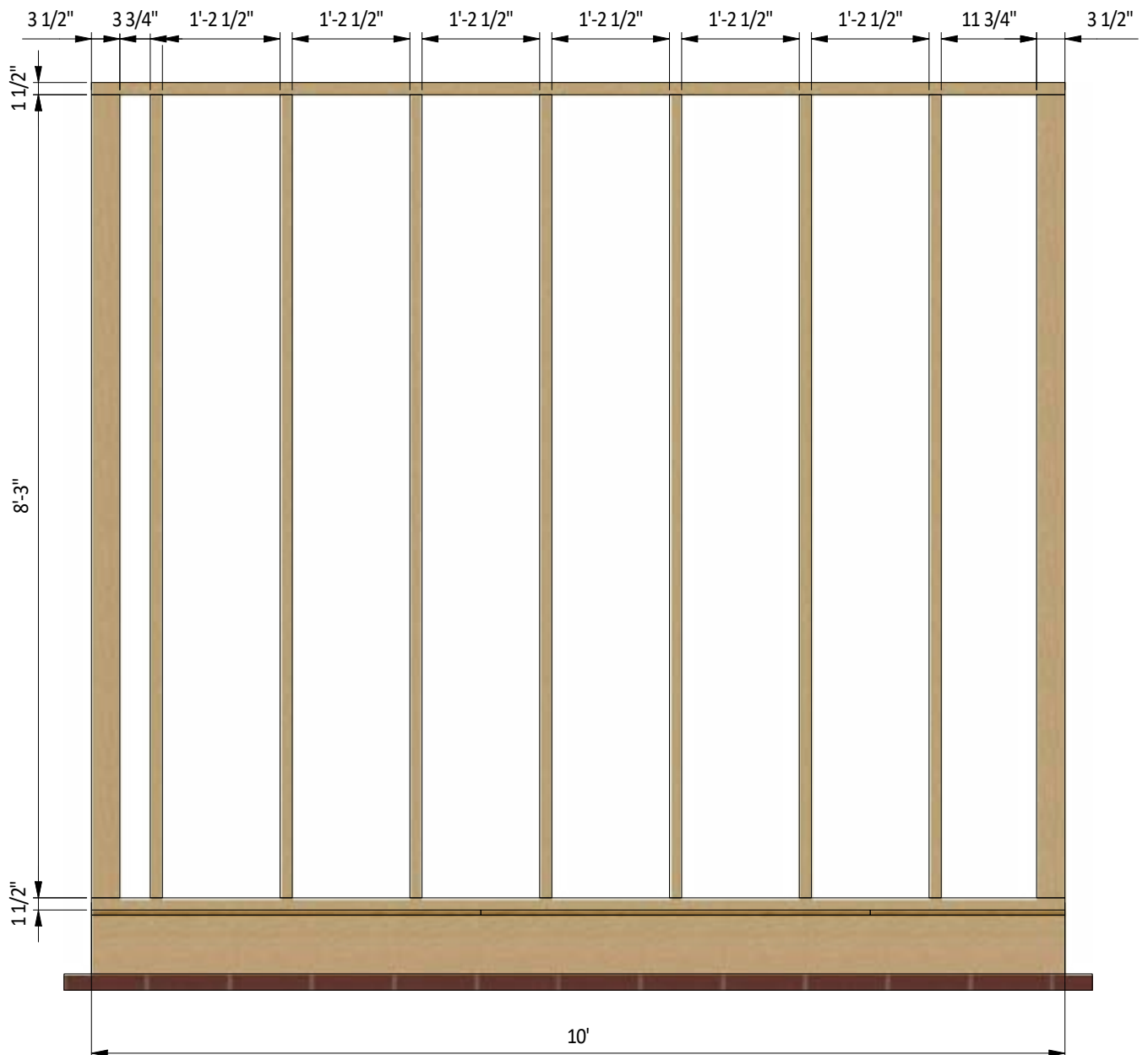
STEP 5

Assemble Back Wall Frame

5.1 Using 1 1/2" x 3 1/2" and 3 1/2" x 3 1/2" pressure-treated lumber, construct back wall frame using the drawing below as a reference. You will need nine boards cut to 8'-3" that will be the studs and two boards cut to 10' that will be the top and bottom plates.

5.2 Connect the beams with 2x3" wood screws.

5.3 Using a speed square or carpenter's square, check the corners to make sure they are 90°.



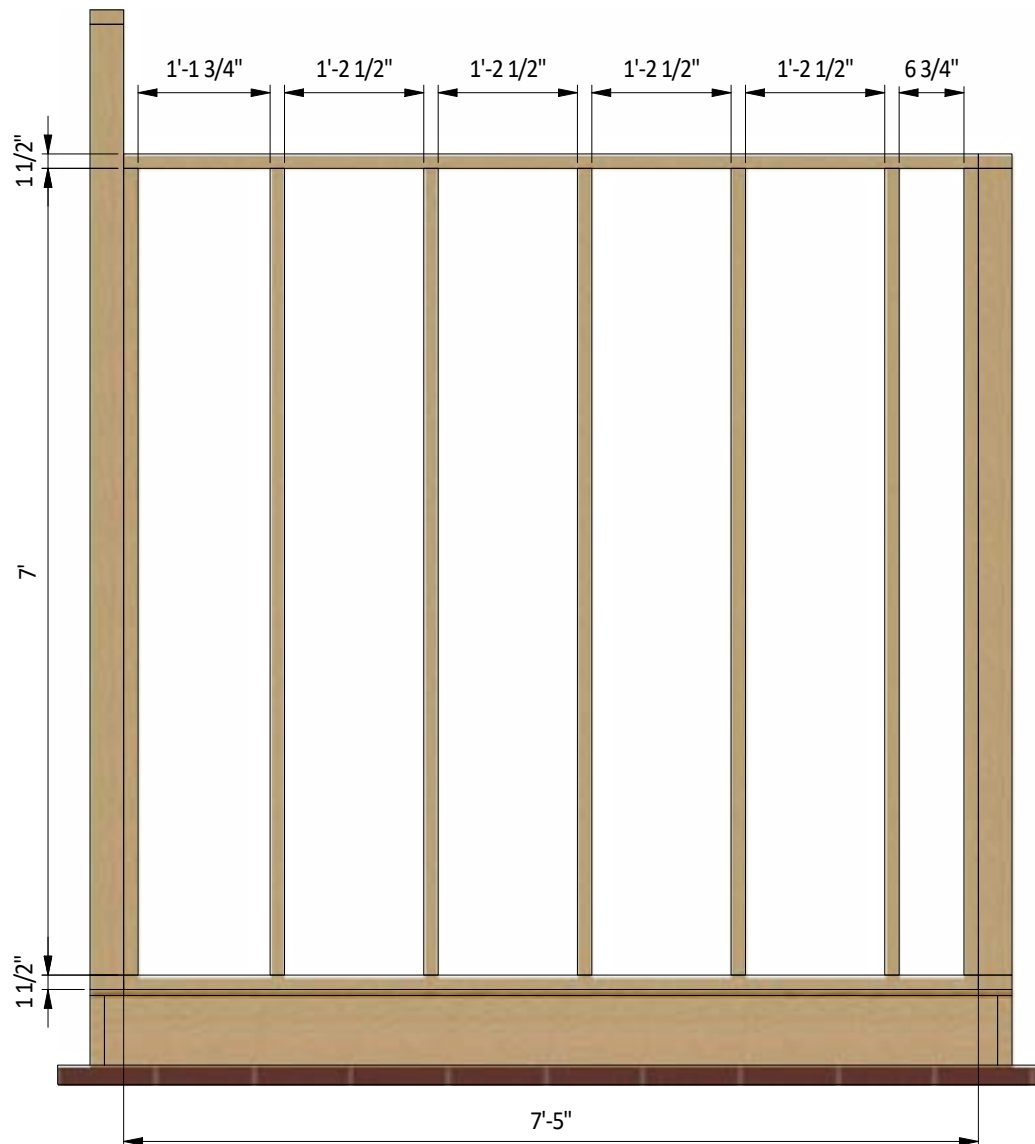
STEP 6

Assemble Side Wall Frames

6.1 Using 1 1/2" x 3 1/2" pressure-treated lumber, construct right and left wall frames using the drawing below as a reference. You will need seven boards cut to 7' that will be the studs and two boards cut to 7'-5" that will be the top and bottom plates.

6.2 Connect the beams with 2x3" wood screws.

6.3 Using a speed square or carpenter's square, check the corners to make sure they are 90°.

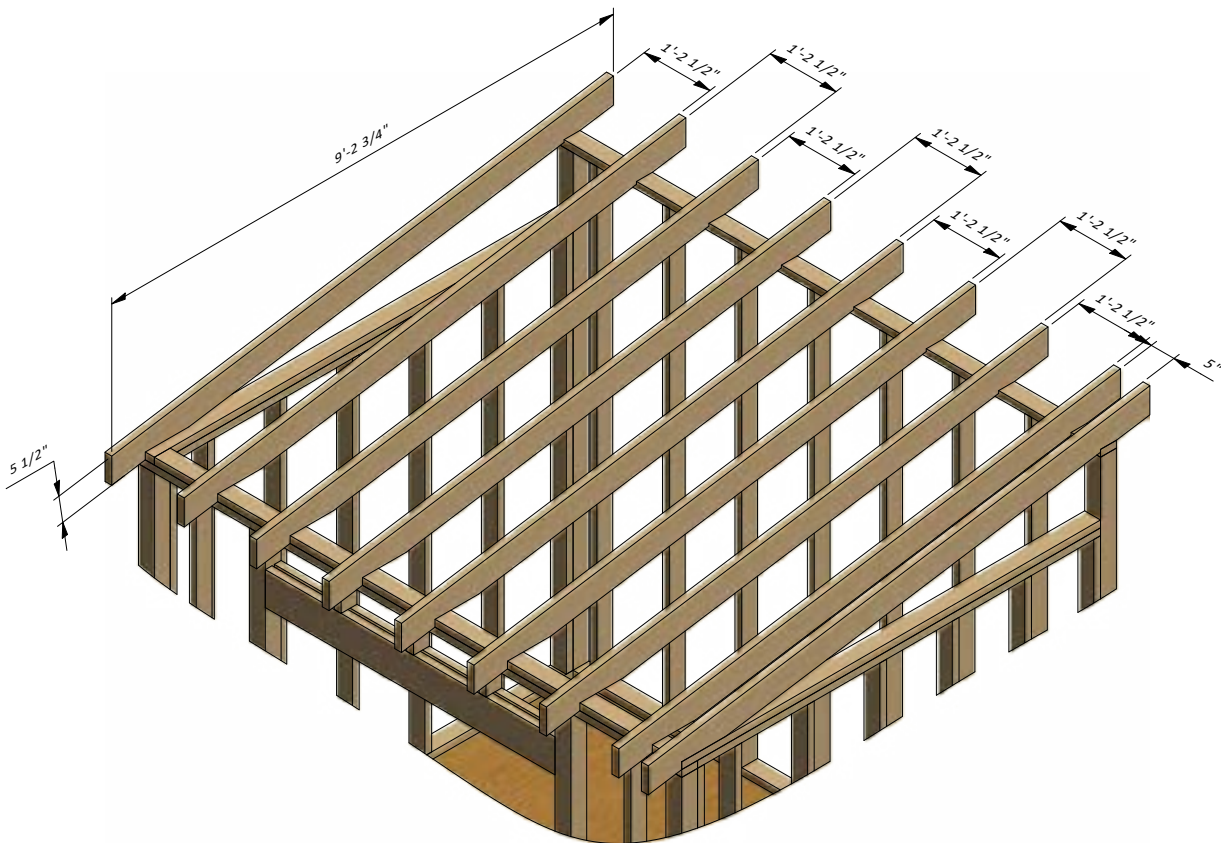


STEP 7

Assemble the Roof Frame

7.1 Using 1 1/2" x 5 1/2" pressure-treated lumber, cut nine rafters 9'-5" long according to the dimensions in drawing below. Cut the recesses in each beam for splicing connection with wall frames.

7.2 Connect the beams with a top frame with the help of 5" wood screws.

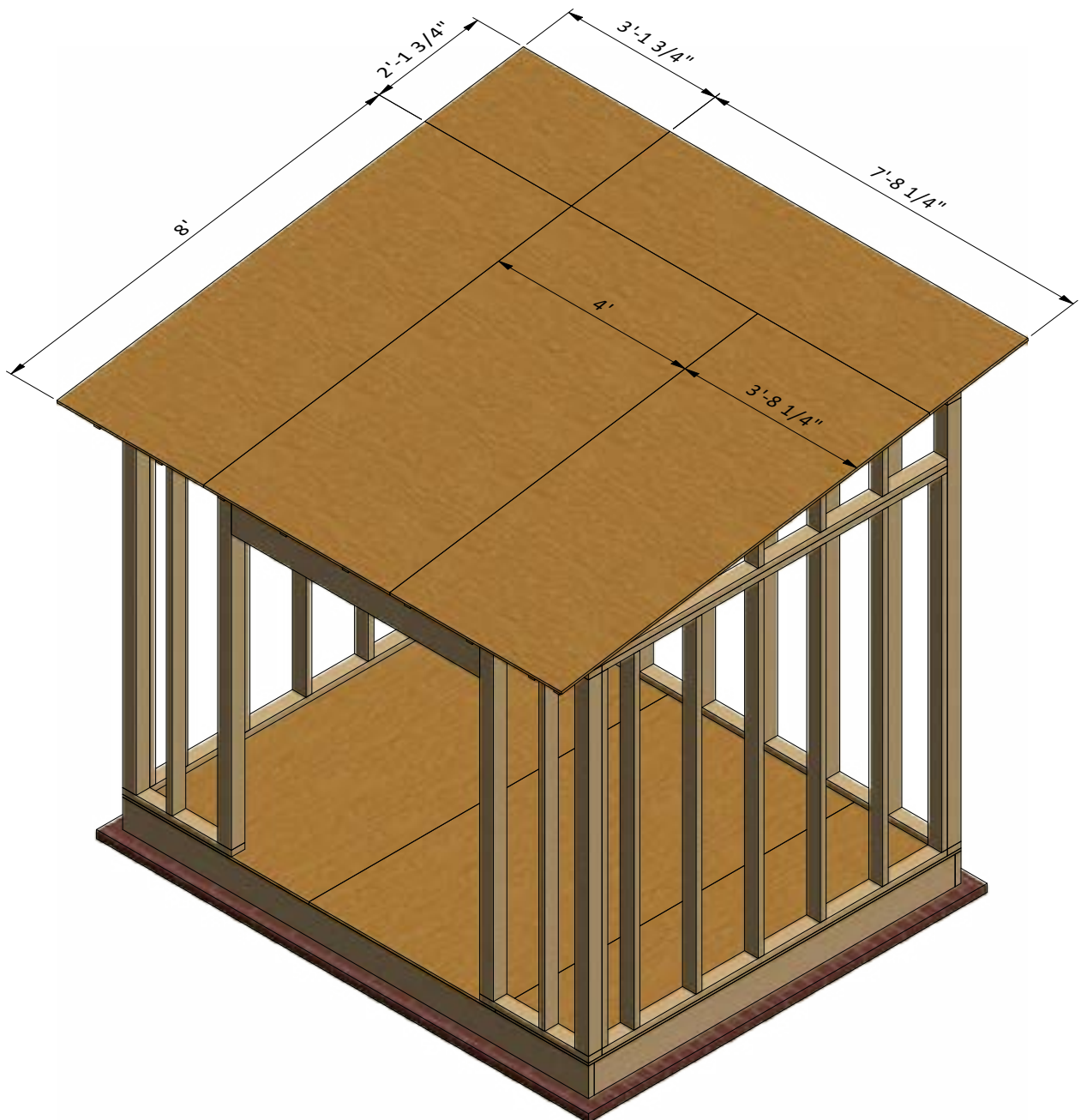


STEP 8

Install Plywood for the Roof

8.1 Cut sheets of 5/8" plywood for the roof sheathing using the drawing below as a guide. You will need one 3'-1 3/4" x 2'-1 3/4" sheet, one 3'-1 3/4" x 8' sheet, one 2'-1 3/4" x 7'-8 1/4", one 4' x 8' sheet and one 3'-8 1/4" x 8' sheet.

8.2 Secure the plywood with 2" wood screws.

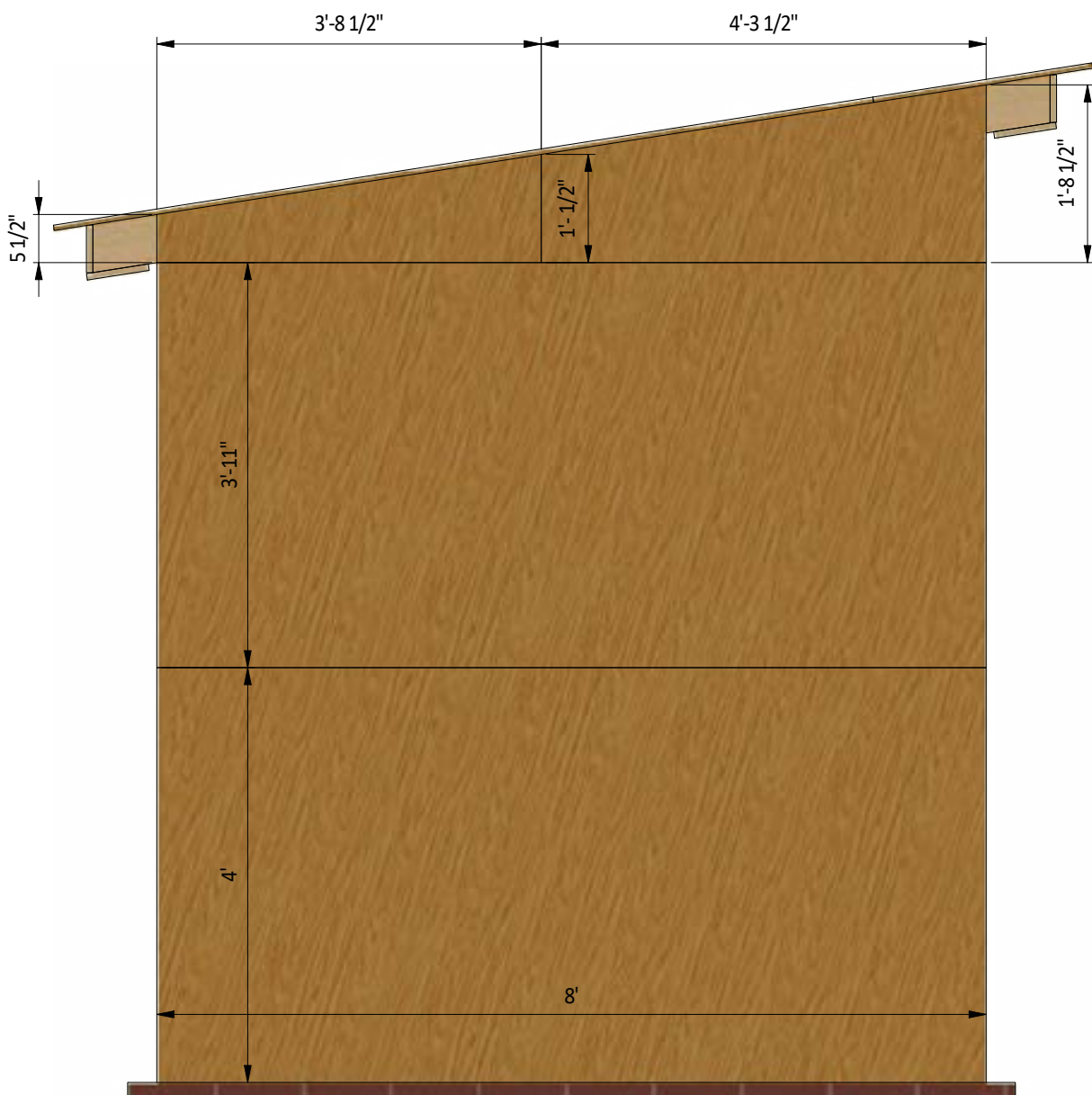


STEP 9

Install Plywood for the Side Walls

9.1 Cut sheets of 5/8" plywood for the left and right walls sheathing using the drawing below as a guide. For each wall you will need one 4' x 8' sheet, one 3'-11" x 8' sheet, one 1'-1/2" x 3'-8 1/2" sheet and one 1'-8 1/2" x 4'-3 1/2" sheet.

9.2 Secure the plywood with 2" wood screws.

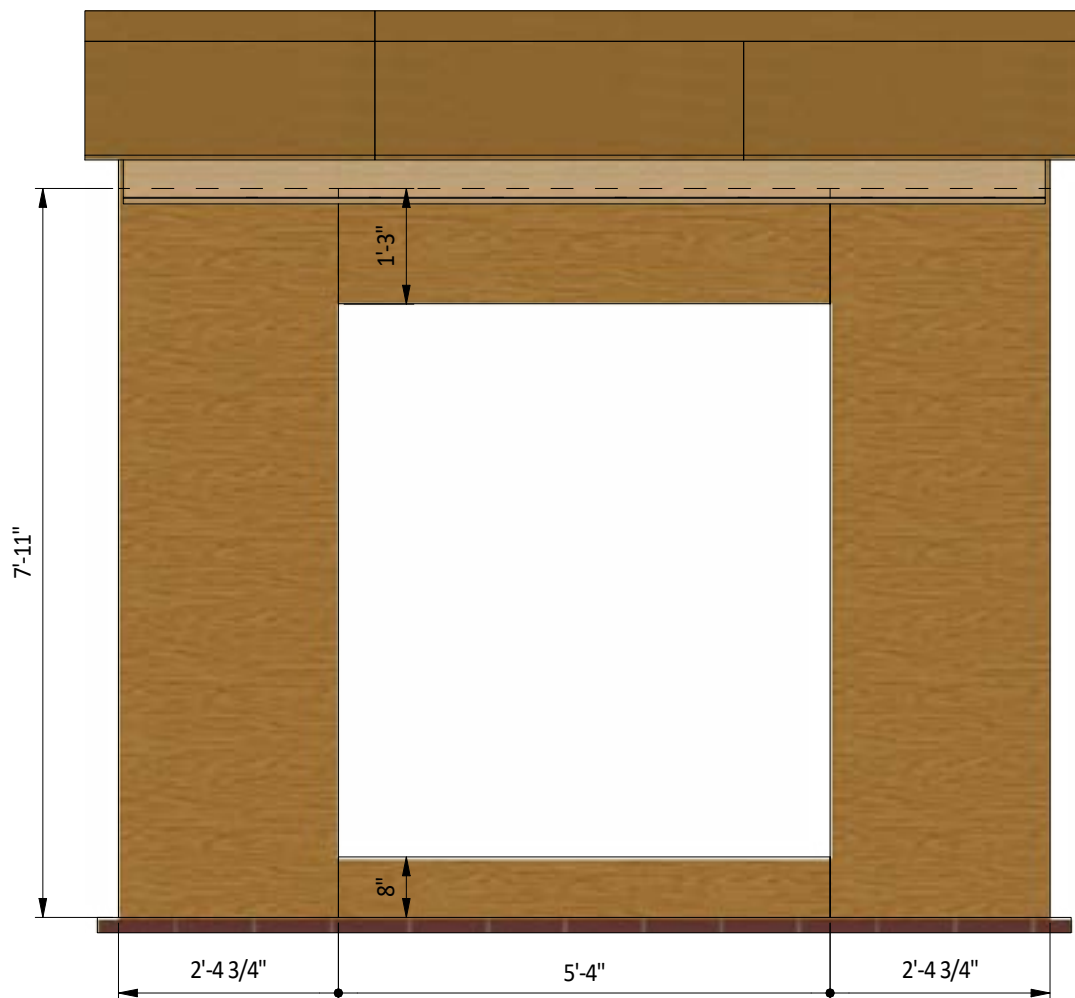


STEP 10

Install Plywood for the Front Wall

10.1 Cut sheets of 5/8" plywood for the front wall sheathing using the drawing below as a guide. You will need two 2'-4 3/4" x 7'-11" sheets, one 8" x 5'-4" sheet and one 1'-3" x 5'-4" sheet.

10.2 Secure the plywood with 2" wood screws.

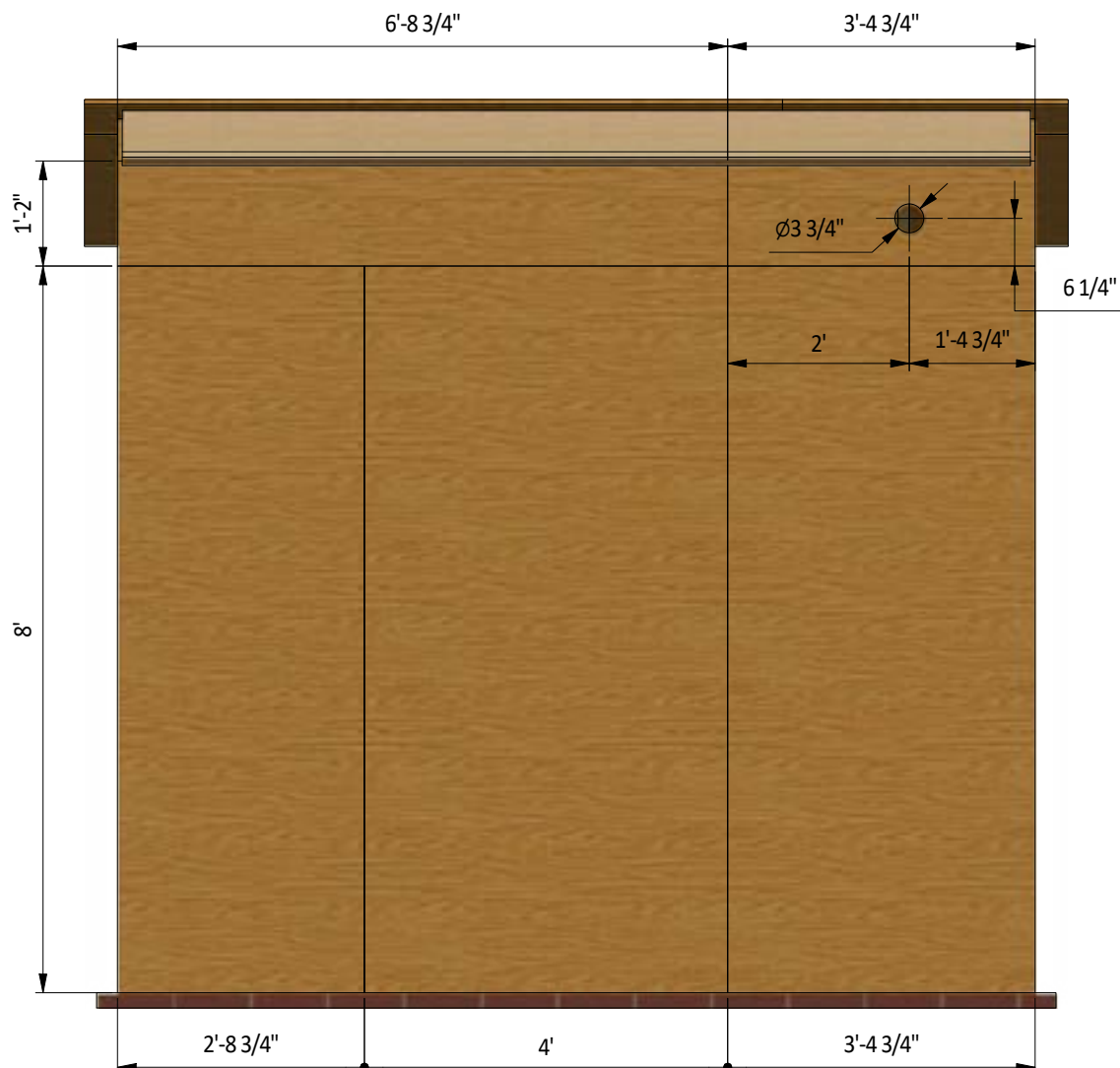


STEP 11

Install Plywood for the Back Wall

11.1 Cut sheets of 5/8" plywood for the back wall sheathing using the drawing below as a guide. You will need one 2'-8 3/4" x 8' sheet, one 4' x 8' sheet, one 3'-4 3/4" x 8' sheet, one 1'-2" x 6'-8 3/4" sheet and one 1'-2" x 3'-4 3/4" sheet. Ensure to provide cutting for ventilation as shown in the illustration.

11.2 Secure the plywood with 2" wood screws.



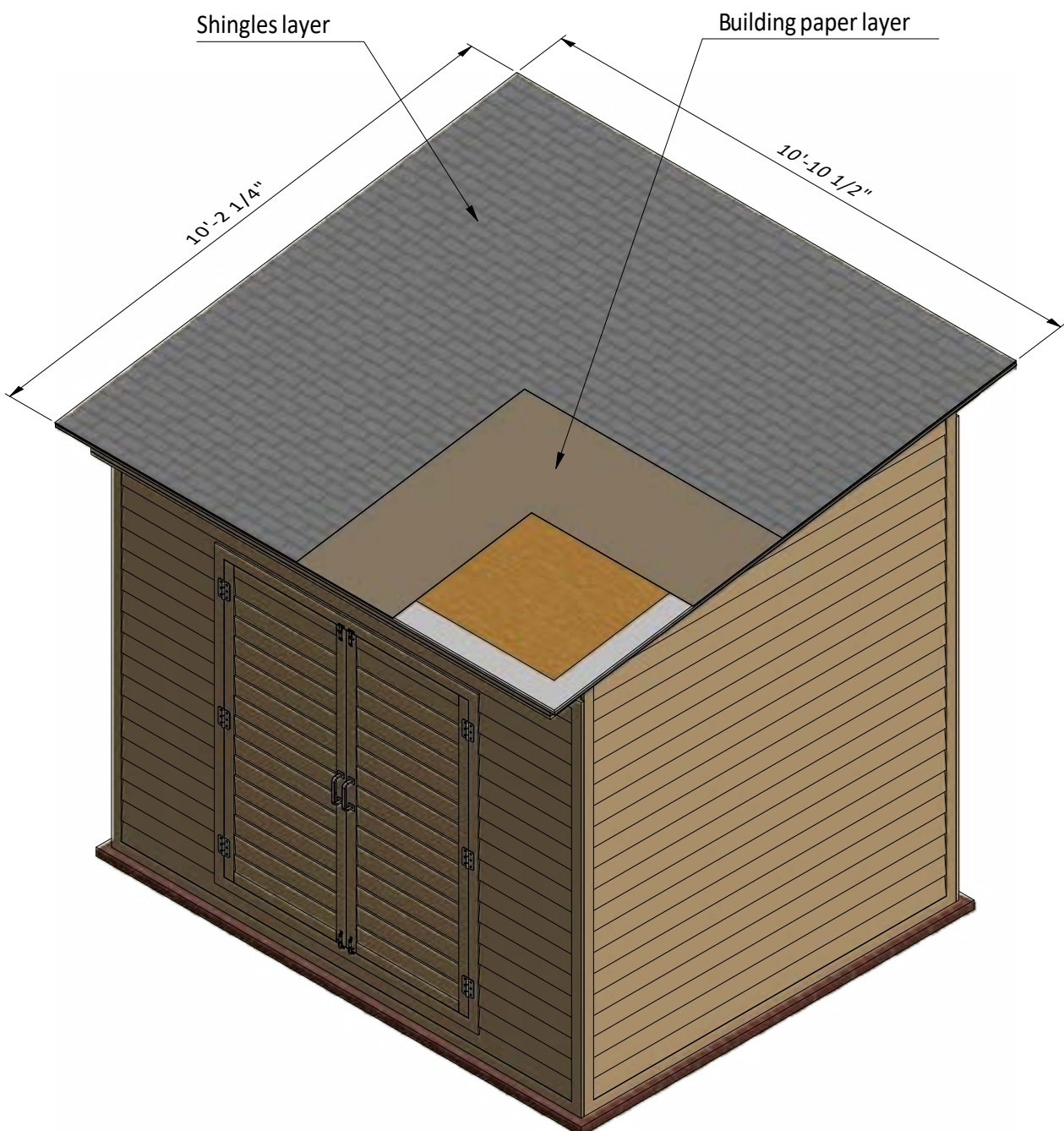
STEP 12

Roof Sheathing Installation

12.1 You will need 112 Sq Ft of building paper and asphalt shingle roofing.

12.2 Cover the plywood and drip edge with building paper. Try to install sheets with 1" overlapping. Use 2" nails to secure the sheets.

12.3 Install asphalt shingle roofing using an industrial stapler.



STEP 10

Shed Decoration

Now that your shed is all done, you are ready to decorate it any way you want using your favorite paint, stain, or preservative.



Free vs. Premium Plan: What's the Difference?

We offer both free and premium versions of our detailed shed plans, designed to fit your needs and budget. Check out the table below to see the key differences and choose the plan that's right for you:

Features	Free Plan	Premium Plan
Steps Count	10	25
Illustrations per Step	Limited	Every Step
Print Ready Format	X	✓
Step-by-Step Instructions	Basic	Comprehensive
Full Materials & Cutting List	X	✓
Additional Illustrations	X	✓
Additional Blueprints	X	✓
Tools List	X	✓
Fastening Elements List	X	✓
Technical Support	X	✓

[Try Premium Risk-Free](#)

60-day refund policy with no questions asked.



For more great **HOW-TO** plans please visit: <https://craft.camp>

Copyright

The text and illustrations that appear here are the exclusive property of craft.camp and are protected by federal copyright laws. The duplication, sale or distribution of any portion of these plans without prior written consent from the original designer will be subject to the appropriate penalties for copyright infringement. Sharing this plan on the web is only permitted with an indicated original source: <https://craft.camp>